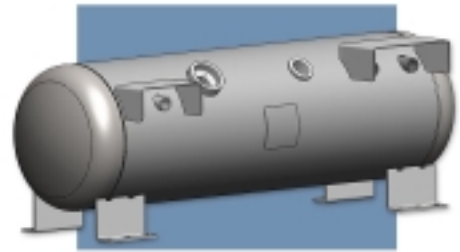


Motor Fuel ASME Tanks & Brackets

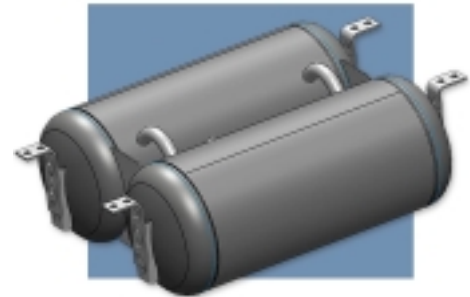
SINGLE TANKS

Part No.	Diameter (Inches)	Length (Inches)	MAWP (PSI)	Water Capacity (Gallons)	LP Capacity (Gallons)	Weight (Pounds)
22987	12	50	312	22.6	18.08	70
225547	12	72	312	33	26.4	105
217447	13	55	312	29.3	23.44	108
2380417	16	34	312	26.2	20.96	98
23467	16	42	312	32.9	26.32	106
20067	16	52	312	41.4	33.12	152
20087	16	62	312	49.8	39.84	146
212347	18	80	312	81.8	65.44	234
23127	20	48	312	58.4	46.72	177
24457	20	48	312	58.4	46.72	196
23567	20	60	312	74.2	59.36	217
26087	20	60	312	74.2	59.36	231
200247	20	60	312	74.2	59.36	225
20597	24	62	312	109.3	87.44	322
23657	24	62	312	109.3	87.44	370



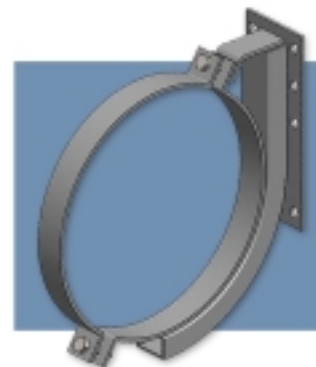
MANIFOLD TANKS

Part No.	Diameter (Inches)	Length (Inches)	MAWP (PSI)	Water Capacity (Gallons)	LP Capacity (Gallons)	Weight (Pounds)
270155	10 & 12	30	312	22.4	17.92	113
270162	10 & 13	30 & 30	312	24.6	19.68	135
270159	10 & 13	35 & 35	312	27.9	22.32	140
270160	10 & 14	30	312	26.9	21.52	116
270161	11 & 11	40 & 40	312	30.2	24.16	130
270158	13 & 13	32	312	32.8	26.24	133
270157	13, 13 & 11	34, 37 & 36	312	50.25	40.2	230



BRACKETS

Part No.	Diameter (Inches)	Weight (Pounds)	Description
23964	10	24	Standard - Gray
23964.1	10	24	Standard - White
23504	12	25	Standard - Gray
23504.1	12	25	Standard - White
2636	14	28	Heavy Duty - Gray
2636.1	14	28	Heavy Duty - White
2518	16	39	Standard - Gray
2518.1	16	39	Standard - White
25181	16	60	Heavy Duty - Gray
2506	18	38	Standard - Gray
2506.1	18	38	Standard - White
25291	18	62	Heavy Duty - Gray
25291.1	18	62	Heavy Duty - White
2507	20	40	Standard - Gray
2507.1	20	40	Standard - White
2509	24	46	Standard - Gray
2509.1	24	46	Standard - White
25071	20	63	Heavy Duty - Gray
25071.1	20	63	Heavy Duty - White
25091	24	64	Heavy Duty - Gray
25091.1	24	64	Heavy Duty - White



800-399-5628
 Fax: 800-877-9988
www.mantank.com
sales@mantank.com