

REPAIR PARTS ILLUSTRATION

When ordering repair parts always give the following information:

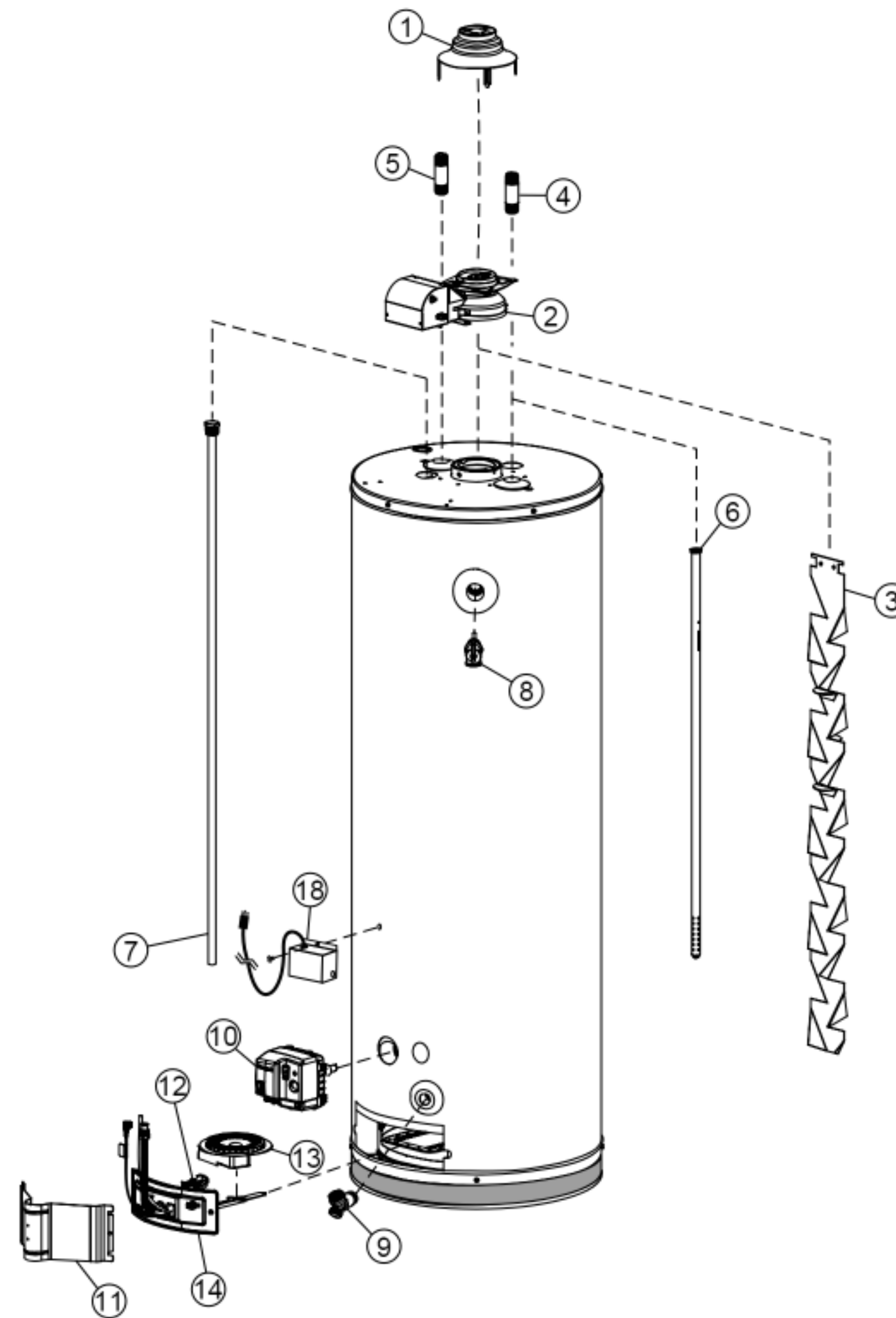
1. Model, serial, and product number
2. Type of gas
3. Item number
4. Parts description

Repair Parts List

Item No.	Parts Description
1	DRAFT HOOD
2	FLUE DAMPER
3	FLUE BAFFLE
4	HEAT TRAP (COLD) - SOME MODELS
5	HEAT TRAP (HOT) - SOME MODELS
6	COLD WATER DIP TUBE
7	ANODE ROD ▲
8	TEMPERATURE & PRESSURE RELIEF VALVE (LOCATED ON SIDE) ■
9	DRAIN VALVE
10	GAS CONTROL VALVE/THERMOSTAT ★
11	OUTER DOOR ★
12A*	STP (SPARK TO PILOT) PILOT ASSEMBLY KIT ★
12B*	STP (SPARK TO PILOT) PILOT ASSEMBLY KIT (L.P.) ★
13A*	BURNER (Natural Gas/Low Nox) ★
13B*	BURNER (L.P.) ★
14A*	BURNER ASSEMBLY ★
14B*	BURNER ASSEMBLY (L.P. Burner) ★
15*	MANIFOLD COMPONENT BLOCK
16*	MANIFOLD DOOR GASKET ★
17*	VIEWPORT ASSEMBLY
18**	TRANSFORMER ASSEMBLY KIT

*Pictured on next page.

** Not shown.



LEGEND

- ▲ Special anode rod (see Anode Rod/Water Odor section)
- Temperature and Pressure Relief Valve is required, but may not be factory installed
- ★ Unique: FVIR System parts

Listed Parts Kits and Illustrations

- Item 12A: Pilot/Igniter-Flame Sensor assembly kit, which contains the pilot, igniter-flame sensor, and retainer clip (Natural Gas)
- Item 12B: Pilot/Igniter-Flame Sensor assembly kit, which contains the pilot, igniter-flame sensor, and retainer clip (L.P. Gas)
- Item 13A: Burner (Natural Gas/L.P. Gas)
- Item 13B: Burner (L.P. Gas)
- Item 14A: Manifold door assembly which contains the manifold tube, gasket, door, pilot\igniter-flame sensor assembly, manifold component block with retainer clip, thermal switch, and pilot tube. (Natural Gas/Low Nox)
- Item 14B: Manifold door assembly which contains the manifold tube, gasket, door, pilot\igniter-flame sensor assembly, manifold component block with retainer clip, thermal switch, and pilot tube. (L.P. Gas)
- Item 15: Contains manifold component block and retainer clip
- Item 16: Contains manifold door gasket
- Item 17: Contains viewport

