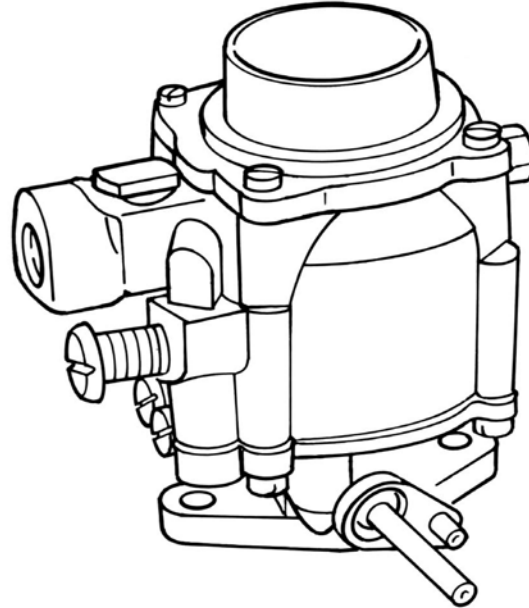


## MODEL 55-500L CARBURETOR

CARBURETORS & MIXERS



## MODEL CA55-500L CARBURETOR

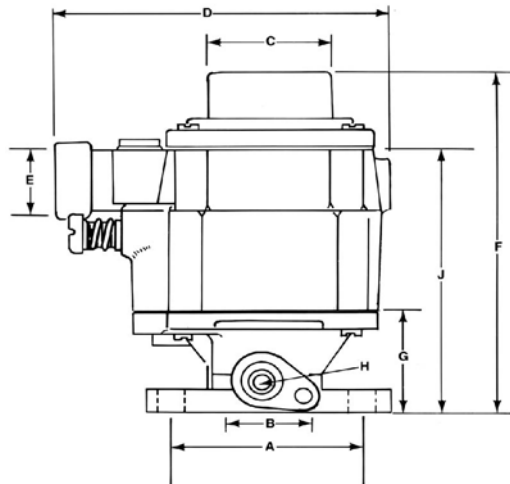


### DESCRIPTION

This Model CA55 is for use with either LPG Vapor or Natural Gas on engines from 1.5 to 73 hp (1 to 54 kW) with a flow rate of 118 CFM (59.0 L/s). This flow-through design may be mounted in either a downdraft, updraft, or sidedraft configuration. Various air horns and flange sizes are available.

### SPECIFICATIONS

Fuel Type .....	LPG Vapor or Natural Gas
Inlet Pressure .....	-1.5" w.c. (-0.37 kPa)
Operating Temperature Range .....	-40°F to +250°F (-40°C to +121°C)
Mounting Position.....	Vertical
Diaphragm Material.....	N/A
HP/kW Rating.....	Up to 73 hp (54 kW) @ 118 CFM (55.7 L/s) and 2.0" in Hg manifold depression

**DIMENSIONS**


Standard Carb	Mixer	Throttle Body	SAE Flange	Air Horn Adapt.	Ctr. To Ctr. Bolt Spacing	Air Horn Bore	Air Horn Dia.	Overall Width	NPT Fuel Inlet	Overall Height	Throttle Body Height	Throttle Shaft Dia.	Flange to Top of Mixer
Replacement carburetor for Toyota 4Y engine													
CA55-503	CA55M-500	BT2-27-173	1-1/4"	A2-66	68.3 mm (2.375")	30.2 mm (1.188")	57.2 mm (1.875")	104.8 mm (4.125")	3/8"	112.7 mm (4.438")	33.4 mm (1.313")	6.4 mm (.250")	87.3 mm (3.438")
CA55-508	CA55M-500	AT2-27	1-1/4"	A2-39	68.3 mm (2.688")	30.2 mm (1.188")	52.4 mm (2.063")	104.8 mm (4.125")	3/8"	112.7 mm (4.438")	33.4 mm (1.313")	6.4 mm (.250")	87.3 mm (3.438")
CA55-510	CA55M-500	AT2-27	1-1/4"	A2-41	68.3 mm (2.688")	30.2 mm (1.188")	74.6 mm (2.938")	104.8 mm (4.125")	3/8"	117.5 mm (4.625")	33.4 mm (1.313")	6.4 mm (.250")	87.3 mm (3.438")
CA55-524	CA55M-500	BT2-26-6L	1"	A2-35	60.3 mm (2.375")	30.2 mm (1.188")	54.0 mm (2.125")	104.8 mm (4.125")	3/8"	112.7 mm (4.438")	33.4 mm (1.313")	6.4 mm (.250")	87.3 mm (3.438")
CA55-542	CA55M-500	BT2-26-4	1"	A2-35	60.3 mm (2.375")	30.2 mm (1.188")	54.0 mm (2.125")	104.8 mm (4.125")	3/8"	112.7 mm (4.438")	33.4 mm (1.313")	6.4 mm (.250")	87.3 mm (3.438")
CA55-553	CA55M-500	BT2-26-7	1"	A2-65	60.3 mm (2.375")	30.2 mm (1.188")	49.2 mm (1.938")	104.8 mm (4.125")	3/8"	128.6 mm (5.063")	33.4 mm (1.313")	6.4 mm (.250")	87.3 mm (3.438")
CA55-553-2	CA55M-500	BT2-26-7	1"	A2-65	60.3 mm (2.375")	30.2 mm (1.188")	49.2 mm (1.938")	104.8 mm (4.125")	3/8"	128.6 mm (5.063")	33.4 mm (1.313")	6.4 mm (.250")	87.3 mm (3.438")
CA55-576	CA55M-500	BT2-44-1		A2-59	53.0 mm (2.087")	27.0 mm (1.063")	43.0 mm (1.693")	104.8 mm (4.125")	3/8"	112.7 mm (4.438")	33.4 mm (1.313")	6.4 mm (.250")	87.3 mm (3.438")
CA55-577	CA55M-500	BT2-44-2		A2-59	53.0 mm (2.087")	27.0 mm (1.063")	43.0 mm (1.693")	104.8 mm (4.125")	3/8"	112.7 mm (4.438")	33.4 mm (1.313")	6.4 mm (.250")	87.3 mm (3.438")
CA55-577-2	CA55M-500	BT2-44-2		A2-59	53.0 mm (2.087")	27.0 mm (1.063")	43.0 mm (1.693")	104.8 mm (4.125")	3/8"	112.7 mm (4.438")	33.4 mm (1.313")	6.4 mm (.250")	87.3 mm (3.438")
CA55-577-3	CA55M-500	BT2-44-2			53.0 mm (2.087")	27.0 mm (1.063")	43.0 mm (1.693")	104.8 mm (4.125")	3/8"	112.7 mm (4.438")	33.4 mm (1.313")	6.4 mm (.250")	87.3 mm (3.438")
CA55-596	CA55M-500	BT2-27-027	1-1/4"	A2-61	68.3 mm (2.688")	30.2 mm (1.188")	63.5 mm (2.500")	104.8 mm (4.125")	3/8"	103.2 mm (4.063")	33.4 mm (1.313")	6.4 mm (.250")	87.3 mm (3.438")
CA55-596-2	CA55M-500	BT2-27-027	1-1/4"	A2-61-2	68.3 mm (2.688")	30.2 mm (1.188")	63.5 mm (2.500")	104.8 mm (4.125")	3/8"	103.2 mm (4.063")	33.4 mm (1.313")	6.4 mm (.250")	87.3 mm (3.438")
CA55-598	CA55M-500	AT2-27-2	1-1/4"	A2-61	68.3 mm (2.688")	30.2 mm (1.188")	63.5 mm (2.500")	104.8 mm (4.125")	3/8"	103.2 mm (4.063")	33.4 mm (1.313")	6.4 mm (.250")	87.3 mm (3.438")
CA55-598-2	CA55M-500	AT2-27-2	1-1/4"	A2-61-2	68.3 mm (2.688")	30.2 mm (1.188")	63.5 mm (2.500")	104.8 mm (4.125")	3/8"	103.2 mm (4.063")	33.4 mm (1.313")	6.4 mm (.250")	87.3 mm (3.438")
CA55-599-2	CA55M-500	BT2-27-6	1-1/4"	A2-61-2	68.3 mm (2.688")	30.2 mm (1.188")	63.5 mm (2.500")	104.8 mm (4.125")	3/8"	103.2 mm (4.063")	33.4 mm (1.313")	6.4 mm (.250")	87.3 mm (3.438")
CA55-756M	AB1-38	Mixer Only	N/A	A3-84	N/A	N/A	52.4mm (2 1/16")		3/8"			N/A	

# MODEL 55-500L CARBURETOR

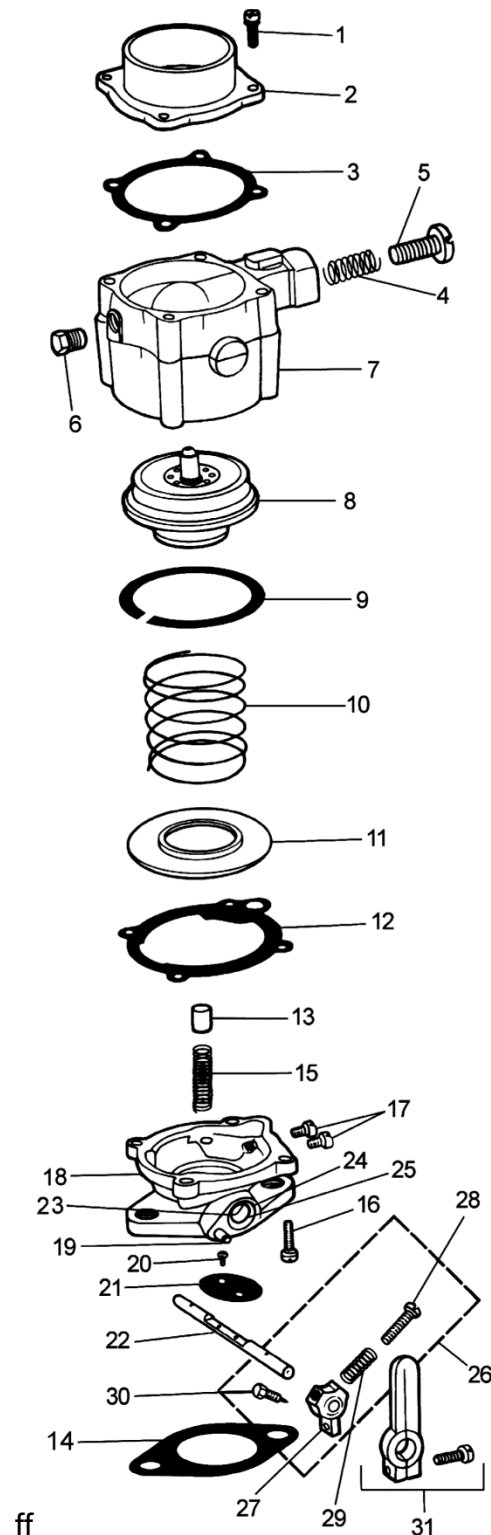
## CARBURETORS & MIXERS



### COMPONENTS

Item	Part	Description
1	S1-3	Screw, 10-24 x 5/8" SEMS (4)
2	See Table	Air Horn Adapter, Ref. to table in Acces.
3	G1-101	Gasket, air horn
4	S2-88	Spring, Idle Screw
5	S1-74	Screw, idle
6	NSS	Plug, 1/8" pipe
7	NSS	Body Assy
8	AV1 -14925*	Air Valve Assy (std.)
9	NSS*	Ring, Air Valve Sealing
10	NSS	Spring, Air Valve
11	NSS*	Plate Assy
12	G1-92*	Gasket, Throttle Body to Mixer
13	P4-1	Piston, Idle Cutoff
14	NSS	Gasket, 1/2" SAE Flange
	G1-16	Gasket, 3/4" SAE Flange
	G1-17	Gasket, 1" SAE Flange
	G1-18	Gasket, 1-1/4" SAE Flange
15	NSS	Spring, Idle Cutoff
16	S1-3	Screw, 10-24 x 5/8" SEMS (4)
17	S1-69	Screw, 1/4-28 x 5/16" (2)
18	NSS	Throat, 1/2" SAE flange
19	NSS	Pin, Throttle Stop
20	S1-22	Screw, 6-32 x 1/4" SEMS (2)
21	NSS	Butterfly, 19.1 mm (.750")
	NSS	Butterfly, 25.4 mm (1.000")
22	S5-6	Throttle Shaft, 6.4 mm (.250") dia.
23	NSS	Bearing, Oilite, 6.4 mm (.250") ID. (2)
24	NSS	Seal, 6.4 mm (.250") shaft (2)
25	R1-9	Ring, Seal Retainer (2)
26	AL1-8-1	Throttle Stop Ass'y., 6.4mm (.250") ID.
27	NSS	Throttle Stop Lever
28	S1-21	Stop Screw, 10-32 x 3/4"
29	S2-15	Spring, Idle Stop Screw
30	S1-18	Screw Pin, Throttle Stop
31	AL1-7-1	Throttle Lever w/Screw

\*Included in repair kit



ff



### ASSEMBLIES & ACCESSORIES

#### MIXER ASSEMBLIES

MIXER	BODY ASSY	AIR/GAS VALVE	OVERALL WIDTH	OVERALL HEIGHT
CA55M-500	NSS	AV1-14925	104.8MM (4.125")	57.2MM (2.250")
CA55M-500-2	NSS	AV1-14926	104.8MM (4.125")	57.2MM (2.250")
CA55M-500-4	NSS	AV1-14925	104.8MM (4.125")	57.2MM (2.250")
CA55M-500-9	NSS	AV1-14925	104.8MM (4.125")	57.2MM (2.250")
CA55M-500	NSS	AV1-14925	104.8MM (4.125")	57.2MM (2.250")

#### THROTTLE BODIES

PART #	DESCRIPTION
AT2-25	3/4" SAE Flange 6.4mm (.250") shaft dia.
AT2-25-2	3/4" SAE Flange 6.4mm (.250") shaft dia. w/vacuum advance
AT2-26	1" SAE Flange 6.4mm (.250") shaft dia.
AT2-26-2	1" SAE Flange 6.4mm (.250") shaft dia. w/vacuum advance
AT2-27	1 1/4" SAE Flange 6.4mm (.250") shaft dia.
AT2-27-2	1 1/4" SAE Flange 6.4mm (.250") shaft dia. w/vacuum
AT2-27-4	1 1/4" SAE Flange 6.4mm (.250") shaft dia. w/AL1-7-3 & AS2-
AT2-44-577	Metric, 53.0mm (2.087") 1-1/16" bore, offset (modified)

#### AIR HORN ADAPTERS

PART #	DESCRIPTION
A2-36	38.1mm (1.500") dia.
A2-37	41.3mm (1.625") dia.
A2-38	47.6mm (1.875") dia.
A2-39	52.4mm (2.069") dia.
A2-41	58.8mm (2.310") dia.
A2-44	AF1-5 Air Cleaner to CA55-500 Series Adapter
A2-59	Adapter, Air Cleaner 1.69" OD
A2-61-2	Air Horn Adapt., tapped 8 mm
A2-65	Air Horn, Toyot 4Y CA55

#### LEVERS (See Lever Section for Other Lever Options)

PART #	DESCRIPTION
AL1-25-1	Assembly, Spring Loaded, Floating 6.4mm (.250") mounting
AL1-26-1	Assembly, Floating, 6.4mm (.250") mounting ID, 54.0mm
AL1-31	Assembly, Shaft Clamp, 6.4mm (.250") mounting ID, 49.2mm

#### RETURN SPRING ASSEMBLIES (OPTIONAL)

PART #	DESCRIPTION
AB4-23	Bracket Assy, Boden Wire: B4-23, C2-1, S1-8
S2-29	Spring/Loaded Lever

#### AIR CLEANER (OPTIONAL)

PART #	DESCRIPTION
AF1-5	Assy, 4.25 m3/min (150cfm), 171.5mm (6.750") OD., 60.3mm (2.374") high

#### THROTTLE SHAFTS

PART #	DESCRIPTION
S5-1	6.4mm (.250") diameter, 114.3mm (4.500") Long
S5-6	6.4mm (.250") diameter, 120.7 mm (4.7500") Long (standard)

#### NEEDLE BEARINGS

PART #	DESCRIPTION
B2-6	Bearing, Needle .438 x 250 x 312